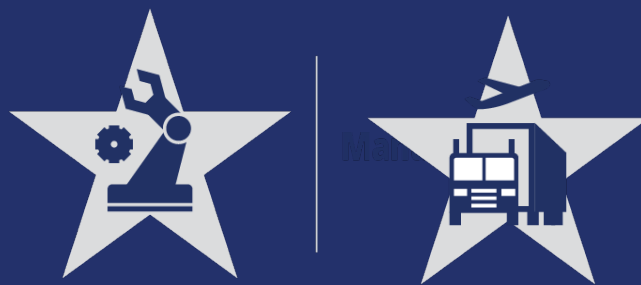


APRIL 2022 - VOLUME II

## This Month We Celebrate



- Manufacturing
- Transportation, Distribution, and Logistics

### Teacher of the Month

ATTN: High School Principals & CTE Administrators! Do you have a CTE teacher who promotes high student engagement, hands-on activities, or other reasons why the CTE teacher should be nominated as CTE teacher of the month? If so, please submit your nomination using the following link:

[Click here to submit your CTE Teacher of the Month.](#)

# HISD | College & Career Readiness

ASPIRE. PREPARE. SUCCEED.

HOUSTON INDEPENDENT SCHOOL DISTRICT



## 10<sup>TH</sup> ANNUAL CAREER EXPO 2022

All HISD students K-12 and their families  
are invited to attend  
this career exploration event.

### WHEN:

Saturday, April 23, 2022 • 10 a.m. – 1 p.m.

### WHERE:

Hattie Mae White Educational Support Center  
4400 W. 18th Street, Houston, TX 77092

- Career Exploration
- Career Resources for all ages
- Career Pathways competitions
- Hands-on activities for all ages
- Food trucks
- Fun and more!

For more information, please contact

**HISD** | Career Readiness  
LEARNING TODAY. EARNING TOMORROW.

713-556-6981



**DON'T  
MISS IT!**

## Summer Conferences 2022 - Professional Development

### Professional Development Request Form

**If you are interested in attending a summer conference, apply by May 15, 2022.**

All requests will be approved by the campus principal and channeled through an approval process.

Conference	Dates	Audience	Link
Certiport	June 20 - 22	Business	<a href="#">Conference Link</a>
CTAT	June 21 -23	Law and Public Service	<a href="#">Conference Link</a>
ASE	July 12 -15	Automotive	<a href="#">Conference Link</a>
THOA	July 17 - 20	Health Science	<a href="#">Conference Link</a>
CTAT	July 18 - 21	CTE Administrators	<a href="#">Conference Link</a>
TIVA	July 24 - 30	Architecture & Construction Arts, A/V Technology & Communications Culinary Arts Government & Public Administration Hospitality Cosmetology IT Law, Public Safety, Corrections & Security Manufacturing STEM TDL	<a href="#">Conference Link</a>
ATAT	July 25 - 29	Agriculture Teachers	<a href="#">Conference Link</a>



**Region 4 Positive Behavioral Interventions and Supports (PBIS)**

**Campus Coaching Project Overview (Virtual)**

**Funded Project Year 2022-23 (CTE Administrator)**

**4 - 19 - 2022 | 1:30 pm – 3:30 pm**

**Tier 2 Classroom Behavior Interventions**

**Classroom Management**

**4- 22 - 2022 | 9:00 am – 3:30 pm**

**Scaffolding Instruction to Support Diverse Learner Needs**

**Inclusive Practices Power Hour**

**5 - 5 - 2022 | 11:30 am – 12:30 pm**

**K-12 State-wide STEM Teacher Training**

**5 - 17 - 2022 | 8:30 am – 3:30 pm**

**5 -18 - 2022 | 8:30 am – 3:30 pm**

**Free course**  
**Science, Math & Technology**  
**Additive manufacturing**



The course introduces you to key concepts. It covers the fundamentals of the additive manufacturing (AM) process, the steps involved in creating a model and building an artefact, the materials and techniques used, as well as the design implications and the factors which affect the functionality of the finished parts.

**Learning outcomes**

- describe additive manufacturing and explain its advantages and disadvantages
- explain the processes used in additive manufacturing for a range of materials and applications
- understand the role of additive manufacturing in the design process and the implications for design
- describe the effects of surface finish and microstructural properties on behavior for components produced using additive manufacturing
- display an awareness of residual stresses that may occur during additive manufacturing and their effects

**Course access**

**Free course**

**Visualization: Visual representations of data and information**



In this free course, Visualization: Visual representations of data and information, you will learn how to interpret, and in some cases create visual representations of data and information that help see manufactured things in a different way.

**Course Learning Outcomes**

- understand what is meant by the term ‘visualization’ within the context of data and information
- interpret and create a range of visual representations of data and information
- recognize a range of visualization models such as cartograms, choropleth maps and hyperbolic trees
- select an appropriate visualization model to represent a given data set
- recognize when visualizations are presenting information in a misleading way.

**Course Access**

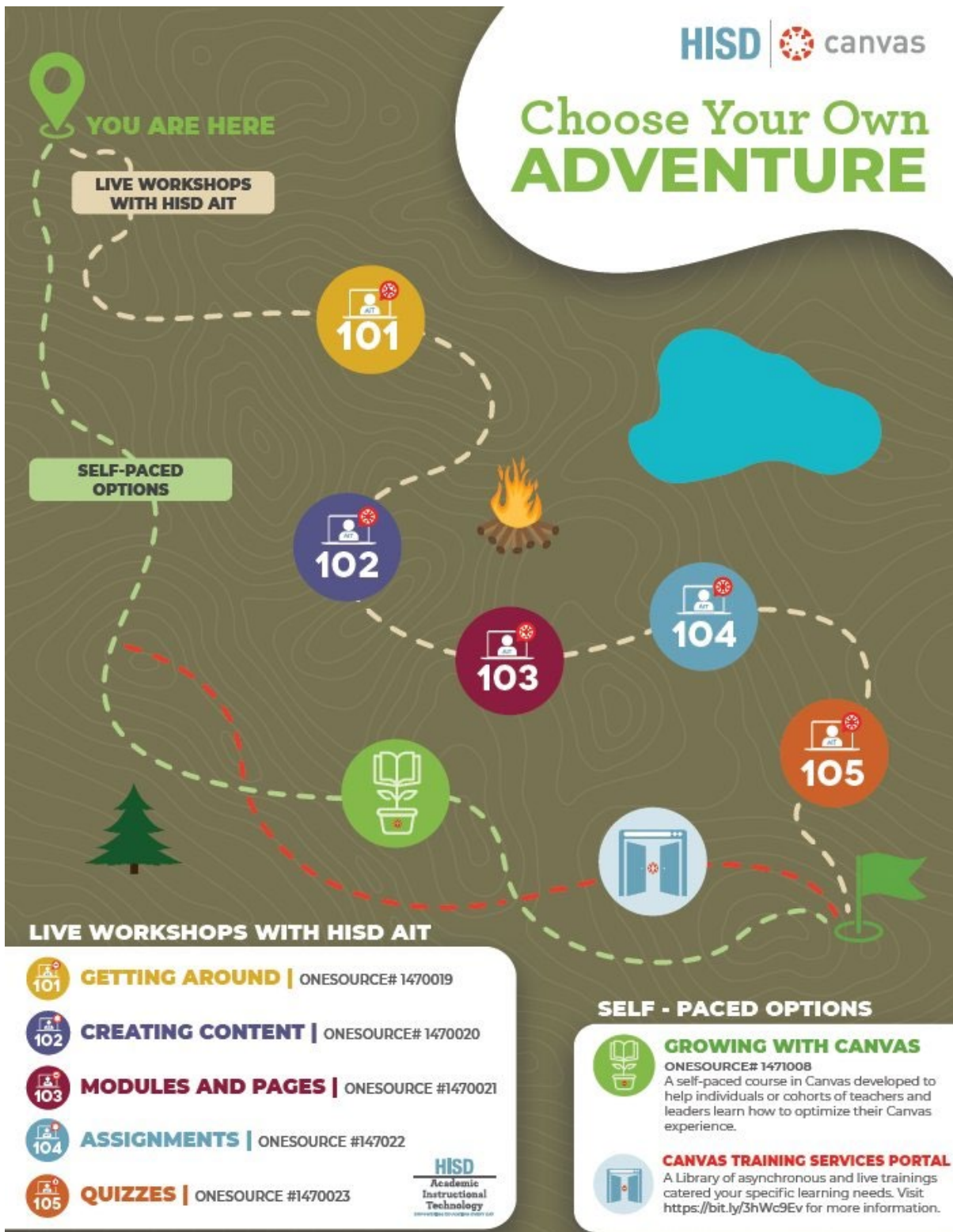


# HISD | College & Career Readiness

ASPIRE. PREPARE. SUCCEED.

HISD | canvas

## Choose Your Own ADVENTURE



## KET K-12 Professional Development

The topics found in this collection include self-paced professional learning courses designed to enhance instruction, with the aim to meet the professional learning needs of today's educators. At the end of each course, teachers and administrators earn a Certificate of Completion for PD and EILA credit, if applicable.



### In this collection you will find:

- Classroom Video Production
- Positive Behavior in Schools
- Formative Assessment
- Professional Learning for Peer Observers 2nd Edition
  - Family Resource and Youth Services Centers



# HISD | College & Career Readiness

ASPIRE. PREPARE. SUCCEED.

The [CareerOneStop](#) is sponsored by the U.S. Department of Labor, and it provides a robust set of tools and information to:

- [Explore Careers](#)
- [Find Training](#)
- [Search for a Job](#)
- [Find Local Help](#)
- [Use the Toolkit](#)



<https://www.careeronestop.org/>

## Additional resources

- Visit [Toolkit](#) to research occupations and industries, find training, certifications, professional associations, financial aid and scholarships, and more
  - Find Local Help for government and community resources in every state
- Review [Outreach materials](#) links for [CareerOneStop](#) slideshow presentations and materials to order
  - Check out the COS blog for features on topics of interest
- Visit our [Web API](#) page to learn how to link to us or customize our web tools for your own website

# HISD | College & Career Readiness

ASPIRE. PREPARE. SUCCEED.

COMPSYCH®  
GuidanceResources® Worldwide

Employee  
Assistance  
Program

Managing Up for Professional Success	Apr 20, 2022	12:00 PM	(GMT-06:00) Central Time (US and Canada)	<a href="https://attendee.gotowebinar.com/register/522699453234731023">https://attendee.gotowebinar.com/register/522699453234731023</a>
Staying Positive While Performing Difficult Client Service Work	Apr 27, 2022	12:00 PM	(GMT-06:00) Central Time (US and Canada)	<a href="https://attendee.gotowebinar.com/register/8925925975722113552">https://attendee.gotowebinar.com/register/8925925975722113552</a>
Social Skills Refresh! How To Have Good Conversations in Social Situations	May 04, 2022	12:00 PM	(GMT-06:00) Central Time (US and Canada)	<a href="https://attendee.gotowebinar.com/register/880910445959557387">https://attendee.gotowebinar.com/register/880910445959557387</a>
How to Receive Criticism and Make It Work for You	May 11, 2022	12:00 PM	(GMT-06:00) Central Time (US and Canada)	<a href="https://attendee.gotowebinar.com/register/8705769662981099535">https://attendee.gotowebinar.com/register/8705769662981099535</a>
Running on E: Adding Energy and Passion to Your Work and Life	May 18, 2022	12:00 PM	(GMT-06:00) Central Time (US and Canada)	<a href="https://attendee.gotowebinar.com/register/6438434849507086606">https://attendee.gotowebinar.com/register/6438434849507086606</a>
Planning a Family Vacation	May 25, 2022	12:00 PM	(GMT-06:00) Central Time (US and Canada)	<a href="https://attendee.gotowebinar.com/register/7641715086177857552">https://attendee.gotowebinar.com/register/7641715086177857552</a>

If you're facing a crisis or need to talk to someone about challenges in your life, the EAP hotline, confidential resource, is available 24 hours a day at no cost to HISD employees. For more information, please [CLICK HERE](#).

# HISD | College & Career Readiness

ASPIRE. PREPARE. SUCCEED.



RICE UNIVERSITY

Office of STEM Engagement

Teacher Professional Development Programs



The Rice Office of STEM Engagement (R-STEM) builds STEM knowledge, skills, and leadership by providing innovative and high quality pre-K through career STEM learning experiences and enhancing the broader impacts of Rice University's research. R-STEM supports K-12 teachers through long-term, inquiry-based professional development with student-centered curriculum and school-based mentoring. We strive to provide teachers of all grade levels with content and pedagogy through day and evening programs. Teachers earn CPE hours, classroom materials, & stipends for completing R-STEM professional development programs.

Find out more at [research.rice.edu/rstem/programs/k-12-teachers](https://research.rice.edu/rstem/programs/k-12-teachers).

## Ongoing Programs

### Texas Leadership Initiative for Inquiry Science Teaching

The Texas Leadership Initiative for Inquiry Science Teaching (TLIST) is a 5-year program for K-12 science teachers that serve to further science content knowledge and pedagogical skills of exemplary teachers while transforming them into effective leaders who can support change at the school, district, and state level. The program runs from 2019-2024.

### Inclusive Learning through Earth, Environmental, and Planetary Sciences

Inclusive Learning through Earth, Environmental, and Planetary Sciences (ILEEPS) is a 3-year program for high school Earth Science teachers to further science content knowledge and pedagogical skills of exemplary high school teachers using Culturally Sustaining Pedagogy (CSP) to enhance high school STEM teachers' cultural awareness. The program runs from 2022-2024.

Rice Office of STEM Engagement (R-STEM)  
5615 Kirby Dr, Ste 730, Houston, TX 77005-2445  
Tel: (713) 348-8211 | Fax: (713) 348-3825 | Email: [stem@rice.edu](mailto:stem@rice.edu)  
Facebook @RiceSTEM | Twitter @RiceU\_STEM | Instagram @RiceU\_STEM | [www.rsearch.rice.edu/rstem](http://www.rsearch.rice.edu/rstem)

## CTE Teacher Training PD Convenings

Registration and participation in the **CTE Teacher Training PD Convenings** are completely **FREE!**

<b>What:</b>	<b>CTE Teacher Training PD Convening</b>
<b>When:</b>	<b>April 19, 2022 - 8:30am to 3:30pm</b> <b>April 20, 2022 - 8:30am to 11:30am</b>
<b>Where:</b>	<b>Virtual - FREE</b>

There will be an “after hours” session (on Day 2) with Mentors and Mentees from 12:30 – 1:30 to match them and meet with them briefly to set the stage for success in their partnerships.

<https://www.smores.com/kz803u>

Registration and participation in the **CTE Teacher Training PD Convenings** are completely **FREE!**

Email Ruthie Kneupper at [ruthie.kneupper@esc20.net](mailto:ruthie.kneupper@esc20.net) with any questions you may have about the CTE Teacher Training Convenings.

**August 16 and 17, 2022**  
**Statewide Convening**  
Registration opens to entire state of Texas  
Virtual  
**PD #86212**



# HISD | College & Career Readiness

ASPIRE. PREPARE. SUCCEED.



## Exploring Sustainability through Student-Driven Projects

# 2022 SUMMER INSTITUTE

HOUSTON, TX

JUNE 27-29

8:30am - 3:30pm CT



KINGWOOD

This **3-day (20 hours)** in-person institute will introduce how to apply education for sustainability as a lens for learning in any subject; transdisciplinary teacher teams encouraged. Each educator will develop a Student Action Project that will address specific community environmental or justice problems. Participants will also use [CELf's Big Ideas of Sustainability](#) framework to guide the integration of sustainability concepts into current teaching practices.

### PROFESSIONAL LEARNING FOR K-12 EDUCATORS

#### Takeaways:

- Ready-to-use student-action projects (standards-aligned)
- Place-based field experiences with data collection
- Community partner engagement
- Transdisciplinary project opportunities (teacher teams)
- Regional school collaborations

#### EFS RESOURCES | TEAM DISCUSSIONS | TEACHER CASE STUDIES

**TO REGISTER,  
CLICK HERE!**

For more information,  
contact Lisa Gianukos  
[lisagianukos@celfeducation.org](mailto:lisagianukos@celfeducation.org)

[Scholarships](#) and Group Rates are available

20000 KINGWOOD DR,  
KINGWOOD, TX 77339

*"My CELf Summer Institute cohorts were a diverse group from different regions and teaching areas. I learned about their different approaches to sustainability and enjoyed seeing them grow with me."*

Carlton Colmenares,  
Science/APES Teacher,  
Seven Lakes High School  
Katy, Texas

Made possible with generous support From



Making our world  
more productive



FIRSTRESERVE



[Scholarship Application Here \(link\)](#)



*"Houston is AI Ready"*

**AI**  
**ARTIFICIAL  
INTELLIGENCE  
& the Future of Houston  
Conference** IN-PERSON  
& VIRTUAL

April 29, 11 a.m.-5 p.m. (Academia)

April 30, 9:30 a.m. - 5 p.m. (Industry)

West Houston Institute  
2811 Hayes Road, Houston, TX 77082

**REGISTER:** [tinyurl.com/HCCai](https://tinyurl.com/HCCai)

**QUESTIONS?** [dit.csa@hccs.edu](mailto:dit.csa@hccs.edu)



**TOPICS**

Interactive Panel Discussions  
Exhibits, Live Demos  
Presentations, Workshops  
AI Training & Careers  
Free Lunch & Snacks

Hosted by HCC Digital & Information Technology Student Clubs & Partners



**HCC LSAMP**

LOUIS STOKES ALLIANCE FOR MINORITY PARTICIPATION



HCC does not discriminate on the basis of race, color, religion, sex, gender identity and gender expression, national origin, age, disability, sexual orientation, or Veteran status. The following person has been designated to handle inquiries regarding the nondiscrimination policies: David Cross, Director, EEO, 504, & Title IX Coordinator, 3100 Main Street, Houston, TX 77002, 713.718.8271 or [Institutional.Equity@hccs.edu](mailto:Institutional.Equity@hccs.edu)